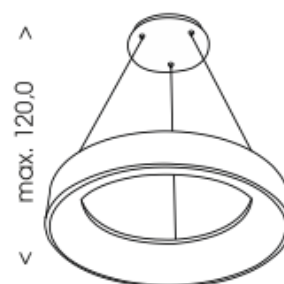
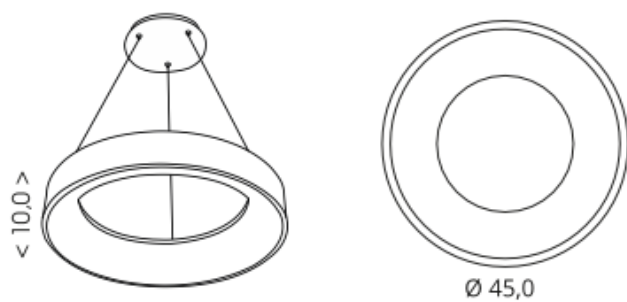
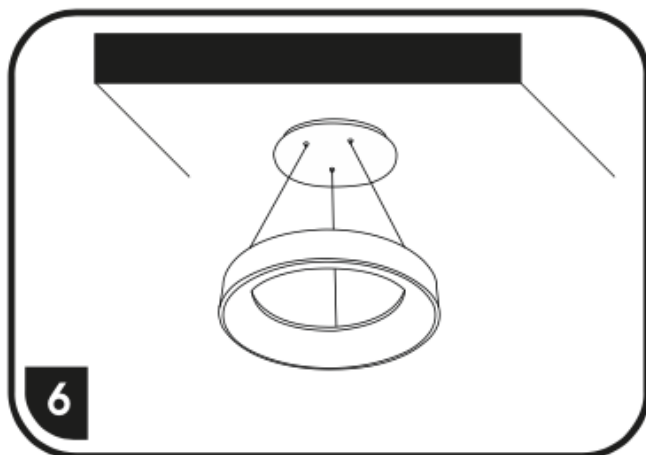
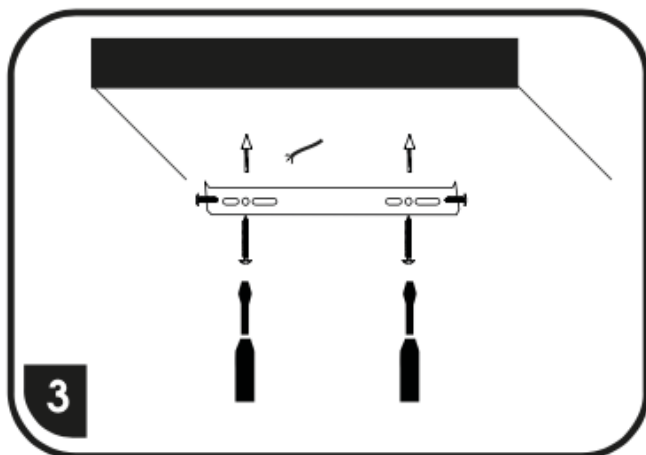
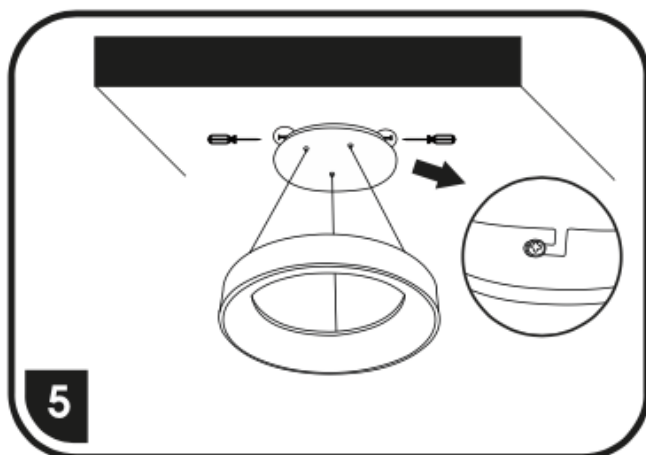
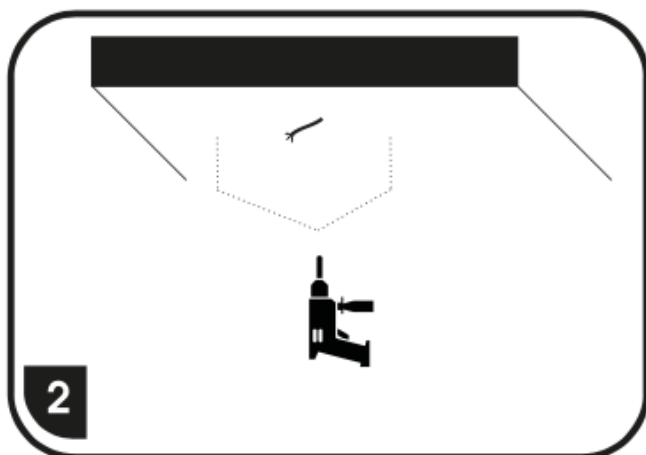
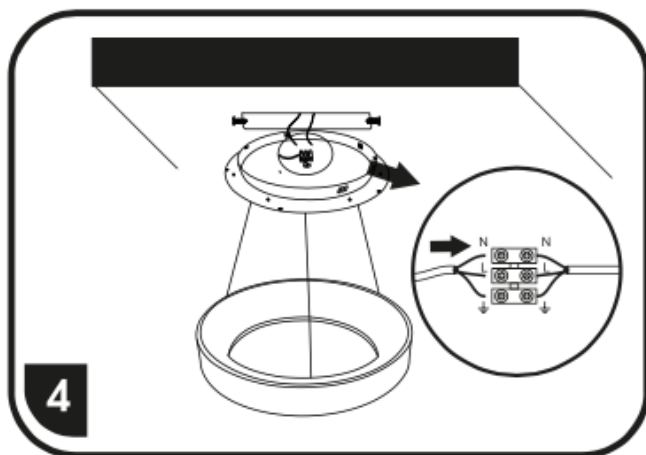
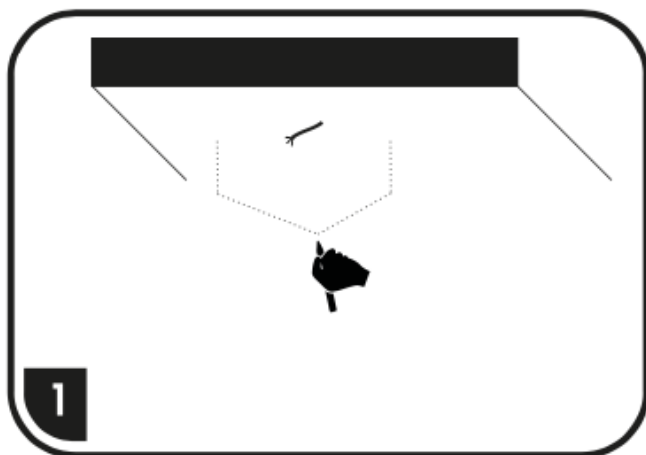


WMKL02R-40W/LED




A/B (1) Pairing

Signaling control light: red light and green light. All lights are shining red from factory settings.

Red signal light on the remote control can remotely control one line of lights and the green one can control the second line.

Settings:

1. Shortly press button **A/B** on the remote control and the signal light will turn green. The remote control is set to the **B** mode by the manufacturer.

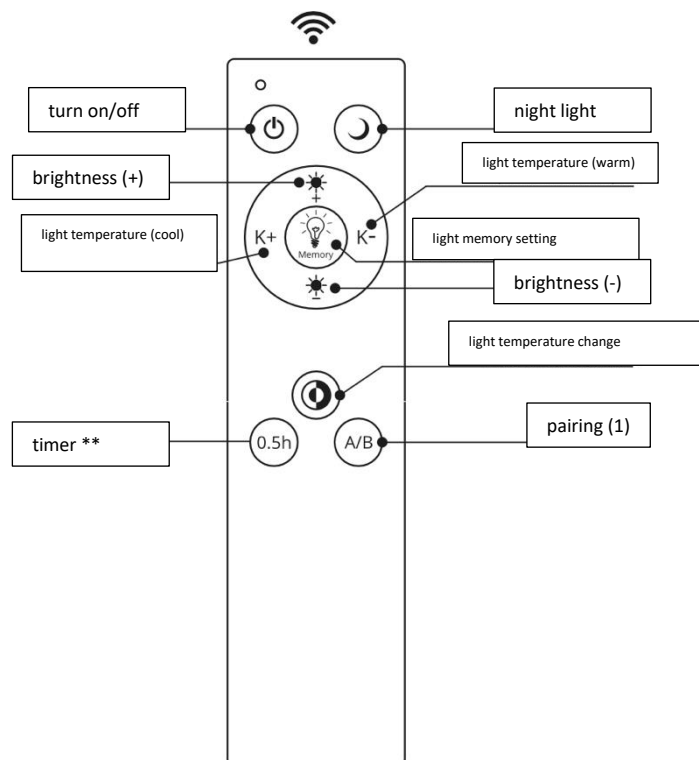
2. Turn the lamp for approx. 10 seconds, turn the lamp on and press  until the light flashes. In the case that you want to pair in the **B** mode, the remote control will control only lights in the **B** mode.

Other lights won't be controlled (they are in the **A** mode).

3. Other lights that are not functioning are in the **A** mode.

Press the **A/B** button, the signal light on the remote control will turn red. Press the **A/B** button again, the signal light on the remote control will turn green.

THE LIGHTS ARE ALREADY PAIRED WITH THE REMOTE CONTROL BY THE MANUFACTURER



*Memory

Set the intensity (color), press and hold the memory button for 3 seconds, the light will flash (setting is saved).

When turning the light off by the switch: after setting with the memory button, turn the light off and leave it for 15 seconds, the memory is saved, then wait for at least 3 more seconds, in the opposite case, the light will change color and intensity.

**Timer

-by pressing the button, you will activate automatic turning off after 30 minutes